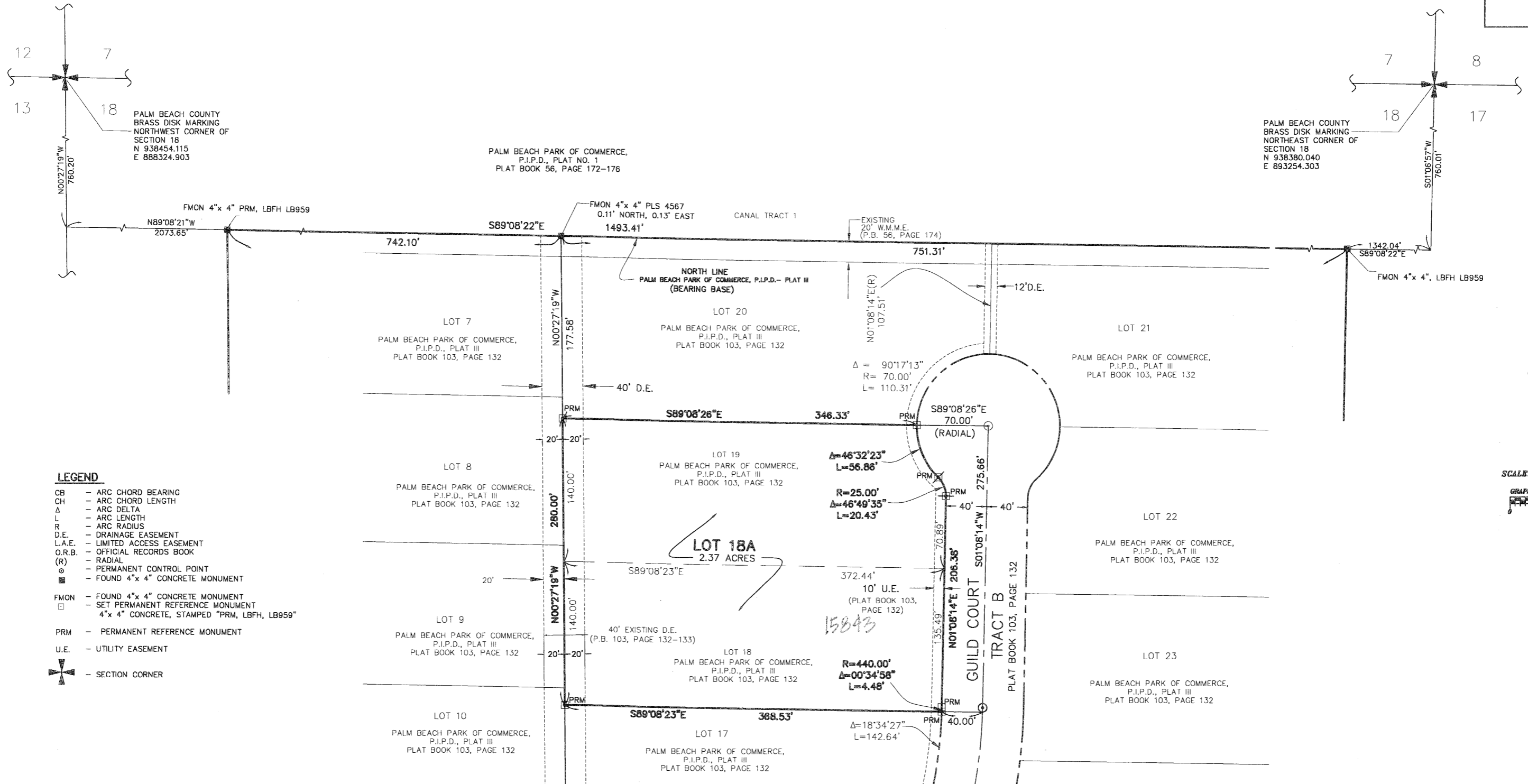


0353-010

178

# PALM BEACH PARK OF COMMERCE, P.I.P.D. - PLAT VII

BEING A REPLAT OF LOTS 18 AND 19, PALM BEACH PARK OF COMMERCE, P.I.P.D.- PLAT III, PLAT BOOK 103, PAGE 132-133  
WITHIN SECTION 18, TOWNSHIP 41 SOUTH, RANGE 41 EAST, PALM BEACH COUNTY, FLORIDA



### LEGEND

- CB - ARC CHORD BEARING
- CH - ARC CHORD LENGTH
- $\Delta$  - ARC DELTA
- L - ARC LENGTH
- R - ARC RADIUS
- D.E. - DRAINAGE EASEMENT
- L.A.E. - LIMITED ACCESS EASEMENT
- O.R.B. - OFFICIAL RECORDS BOOK
- (R) - RADIAL
- ⊙ - PERMANENT CONTROL POINT
- ⊠ - FOUND 4"x 4" CONCRETE MONUMENT
- FMON - FOUND 4"x 4" CONCRETE MONUMENT
- ⊠ - SET PERMANENT REFERENCE MONUMENT
- 4"x 4" CONCRETE, STAMPED "PRM, LBFH, LB959"
- PRM - PERMANENT REFERENCE MONUMENT
- U.E. - UTILITY EASEMENT
- ⊠ - SECTION CORNER

SCALE: 1" = 50'



THIS INSTRUMENT PREPARED BY:  
TED E. PHILLIPS P.S.M., 5932, STATE OF FLORIDA  
FOR  
L.B.F.H., INC.  
CONSULTING ENGINEERS, SURVEYORS & MAPPERS  
3550 S.W. CORPORATE PARKWAY  
PALM CITY, FLORIDA 34990  
LB-959

**lbh** CONSULTING CIVIL ENGINEERS, SURVEYORS & MAPPERS  
"Partners For Results. Value By Design."  
3550 S.W. Corporate Parkway, Palm City, Florida 34990  
(772) 284-3883 Fax: (772) 285-3825  
BPR & FBPE License No: 959 www.lbh.com

2 2  
Sheet of